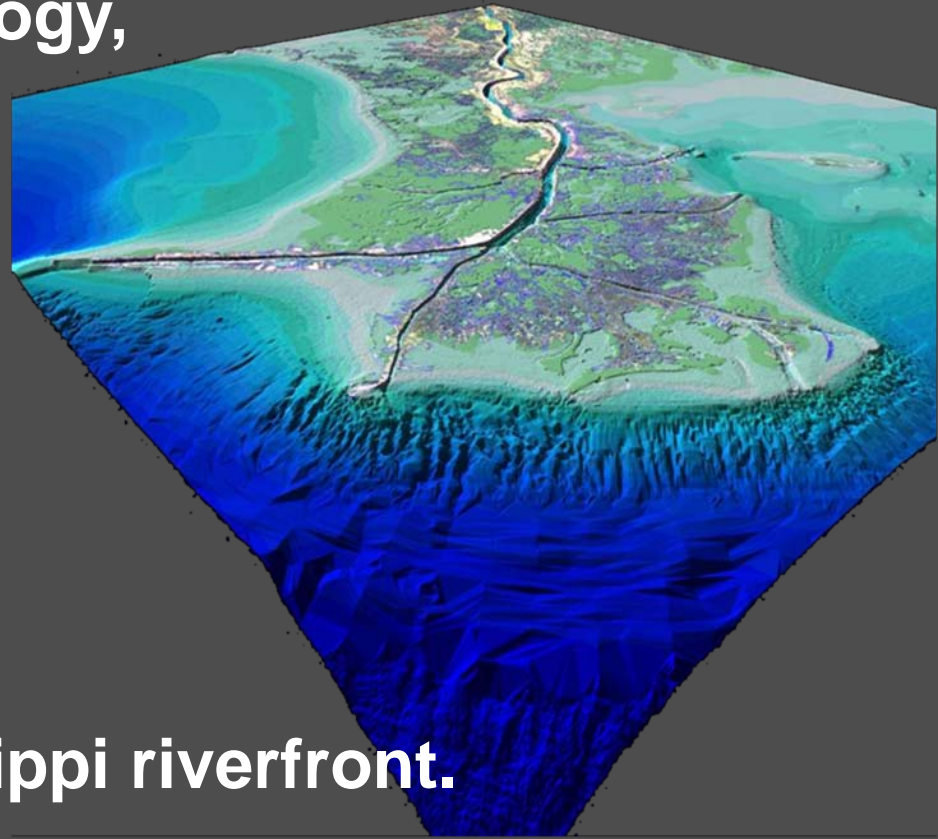


RiverSphere is a Tulane University place  
for art, science, and technology,

*about rivers,*

*for river communities,*

*on the New Orleans Mississippi riverfront.*



**RIVER  
SPHERE**





# Sites and Surroundings in New Orleans Region

North

Xavier University

Lake Pontchartrain

Jefferson Parish

Orleans Parish

Uptown

French Quarter

Tulane University Uptown Campus

RiverSphere

Harvey Canal

Tulane University Downtown Campus

Algiers Canal

MR-GO

St. Bernard Parish

Mississippi River

Plaquemines Parish

English Turn

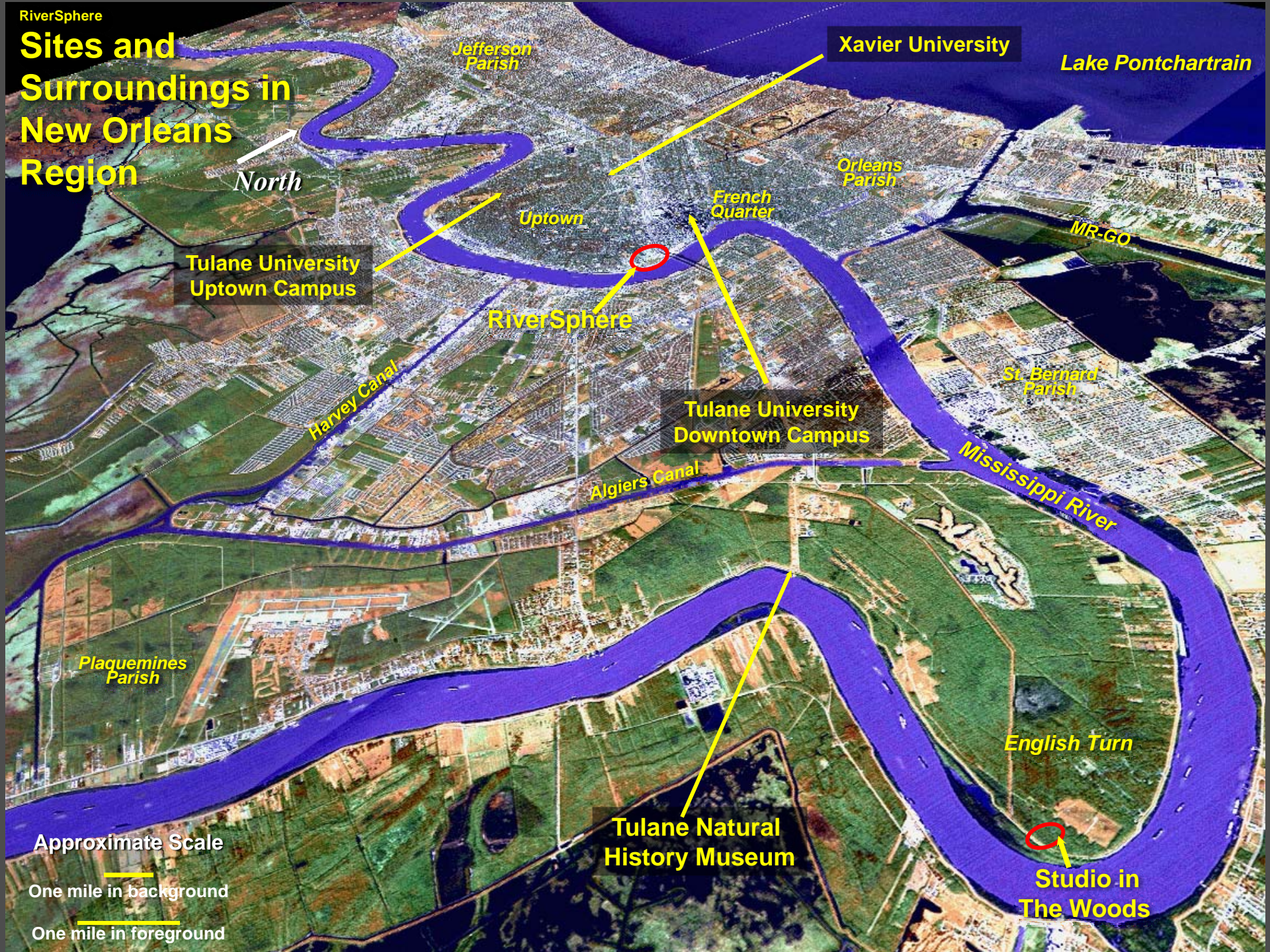
Tulane Natural History Museum

Studio in The Woods

Approximate Scale

One mile in background

One mile in foreground

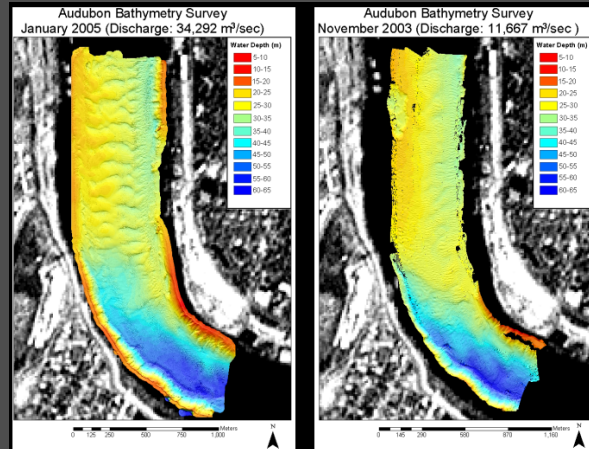




# RIVER SPHERE

# is Science

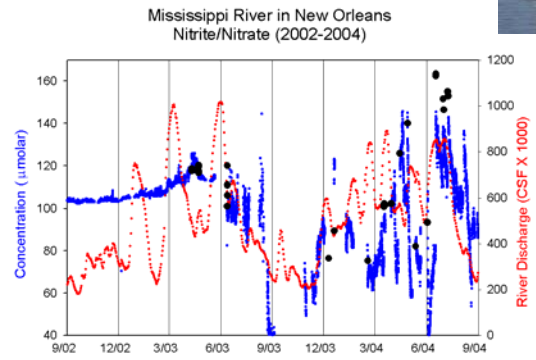
Peer-Reviewed Publications



Subsidence River Monitoring

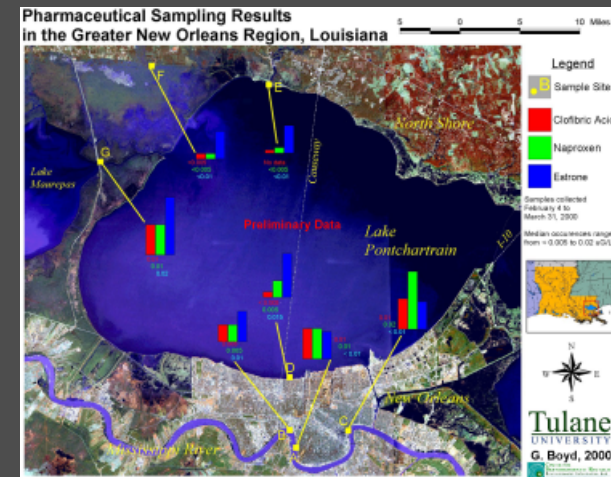
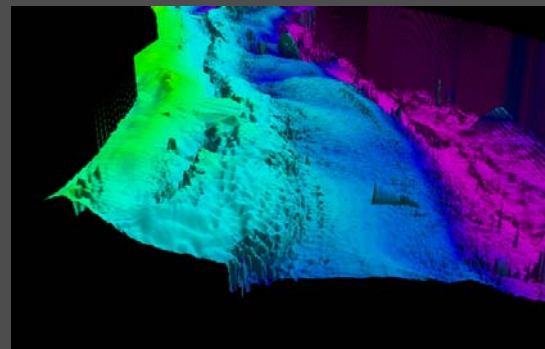
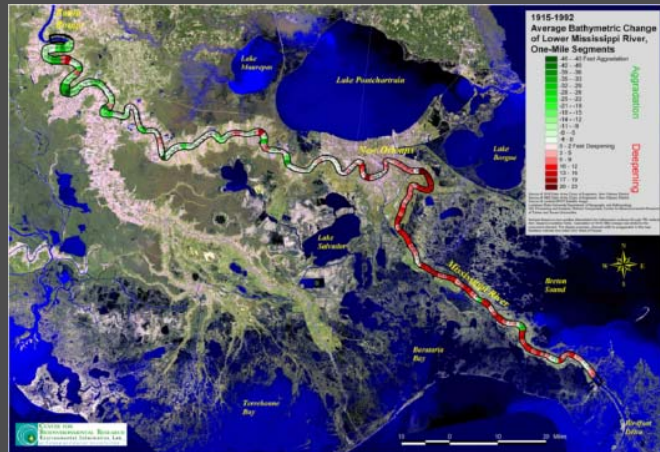


Sediment in the River



Nitrate in the River

Coastal Erosion Applied Science



River Pollution

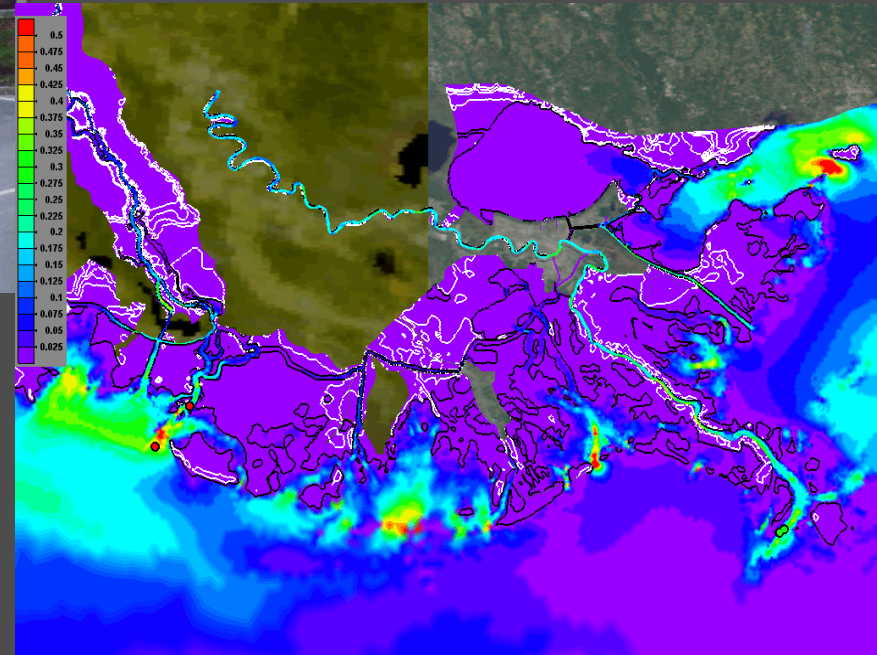
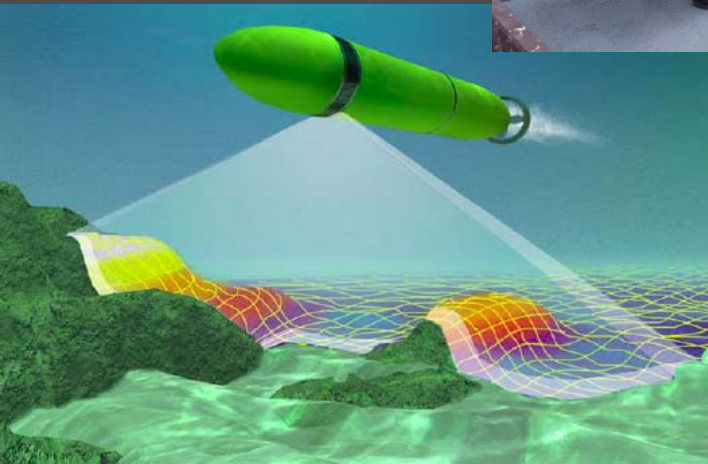
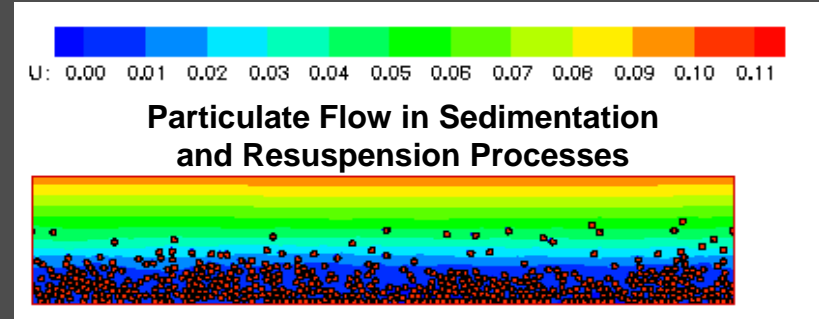
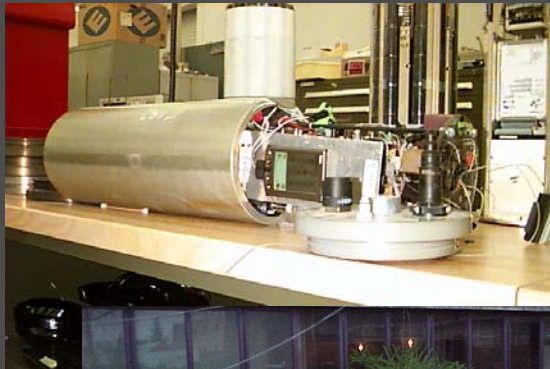
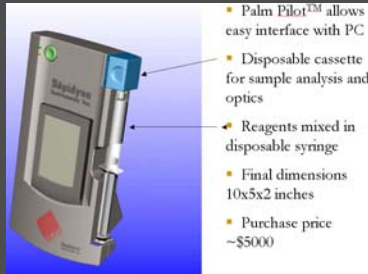
Hypoxia

Invasive Species



# RIVER SPHERE

# is Technology





# RIVER SPHERE

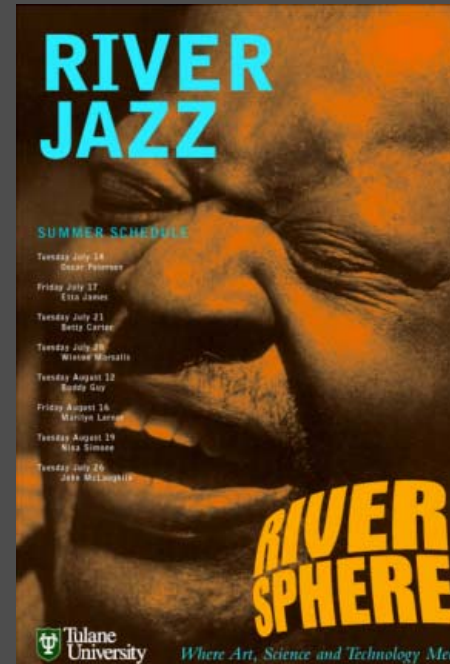
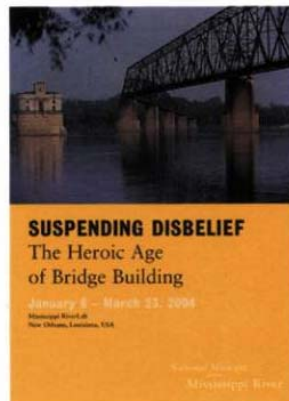
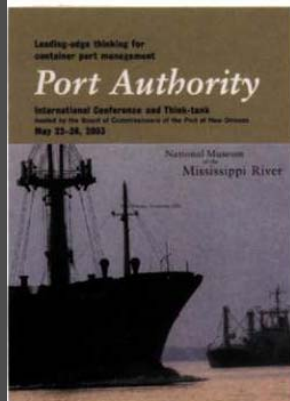
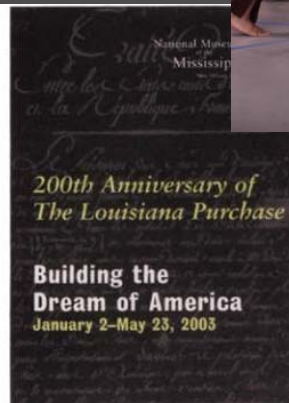
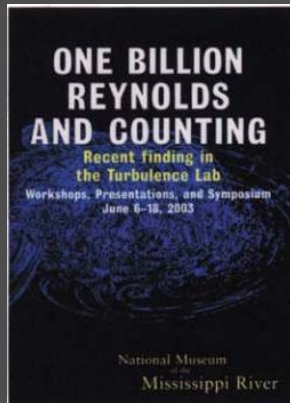
# is Education





# RIVER SPHERE

# is Art, Exhibition and Performance



**RIVER  
SPHERE**

*Where Art, Science and Technology Meet*

=

**Think-tank  
Exhibitions**

**Live events**

**School**

**Riverfront Park**

**University Research**

**Web-Site**

**Rivercraft**



**Tulane  
University**

# LEED

GREEN BUILDING RATING SYSTEM

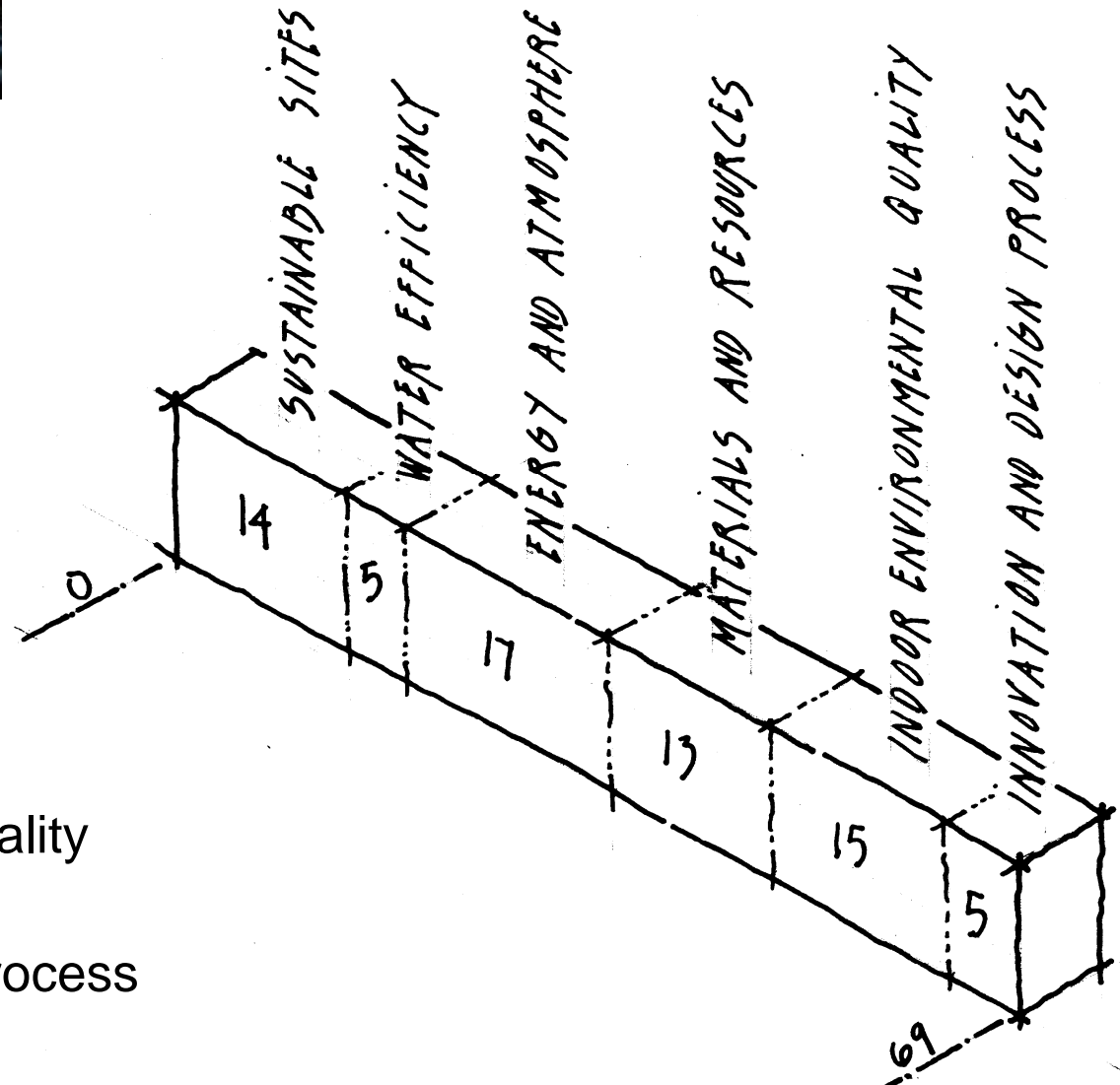
Leadership in Energy & Environmental Design®

A leading-edge system for designing, constructing, operating and certifying the world's greenest buildings.



## Rating Categories:

- Sustainable Sites
- Water Efficiency
- Energy and Atmosphere
- Materials and Resources
- Indoor Environmental Quality
- Innovation and Design Process







RIVER  
SPHERE

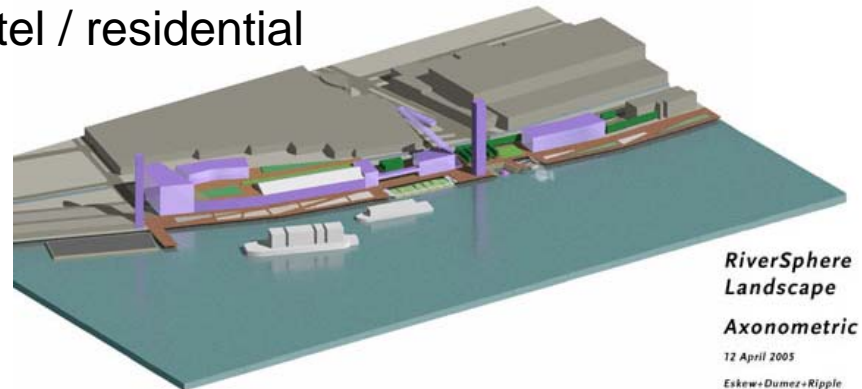


Tulane  
University



# RiverSphere Project Phasing over 8-10 years

- Phase I      Occupancy of Casino shell building by core RiverSphere staff --  
Fall '06 and anchor project laboratories
- Phase II      Delta Queen moves into renovated Casino shell space as tenant  
and construct portion of parking garage
- Phase III      Demolition of Robin Street Wharf and initial site amenities
- Phase IV      Renovation of remaining balance of Casino shell
- Phase V      New facility construction (research & educational facilities) and  
construction of remainder of parking garage
- Phase VI      New facility construction (major exhibit / educational facility) and  
construction of hotel / residential



*RiverSphere  
Landscape  
Axonometric  
12 April 2005  
Eskew+Dumez+Ripple  
Hargreaves Associates*



“We will stay on track with RiverSphere. Even though the phased construction will probably be impacted...it is important to keep the term alive and use the concept as a convening node for the multidisciplinary effort to rebuild the city and region and its relationship to the river.”

*- Doug Meffert, John McLachlan, and Richard Campanella  
6 September, 2005*



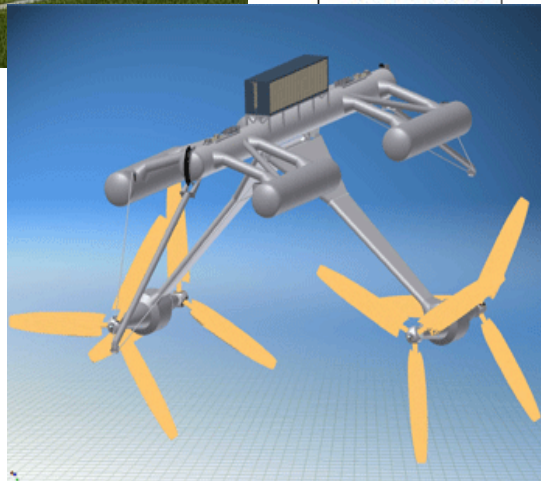
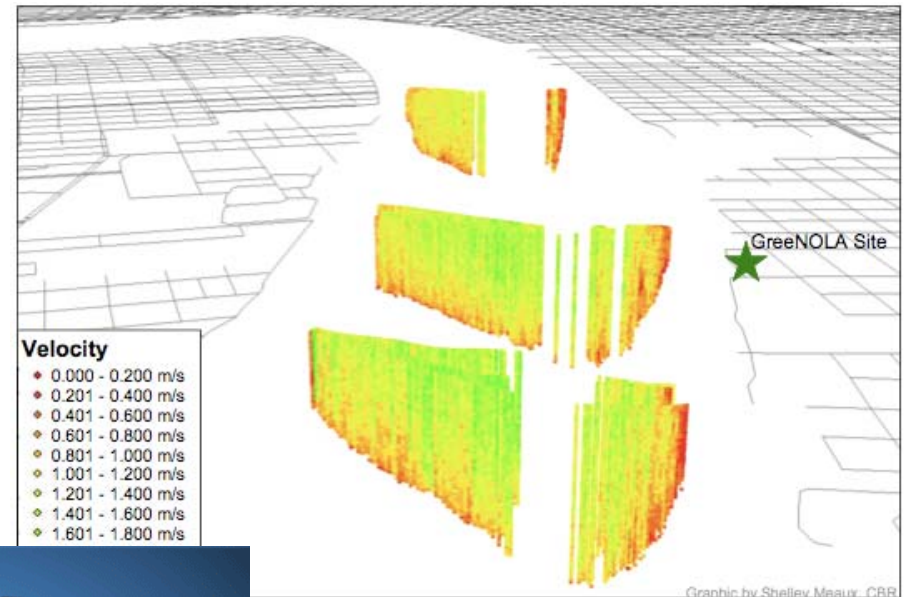
**RIVER  
SPHERE**



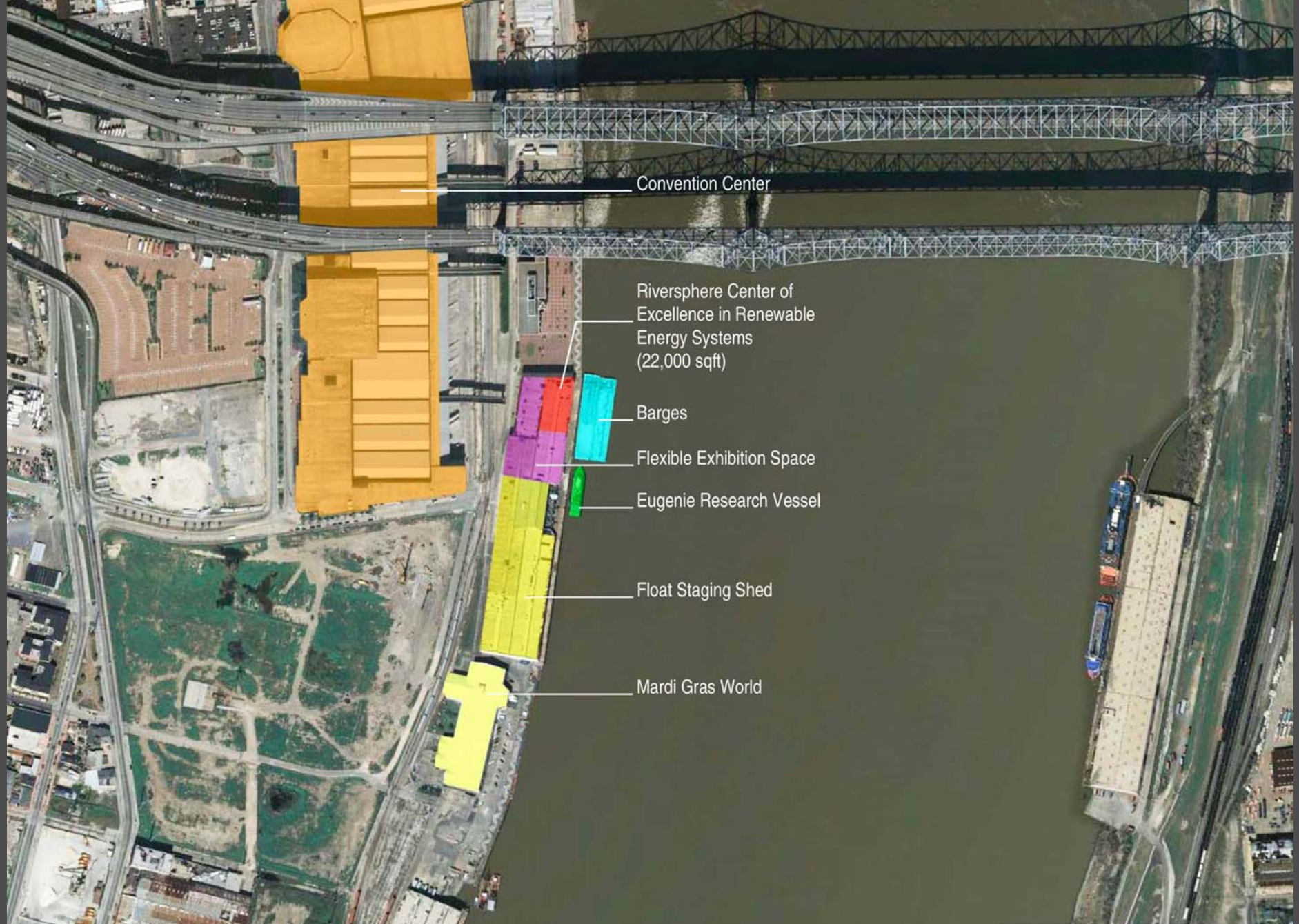


# Sustainable Built and Natural Systems

## Models for Efficient/Renewable Energy







Convention Center

Riversphere Center of  
Excellence in Renewable  
Energy Systems  
(22,000 sqft)

Barges

Flexible Exhibition Space

Eugenie Research Vessel

Float Staging Shed

Mardi Gras World

Proposed Site Plan