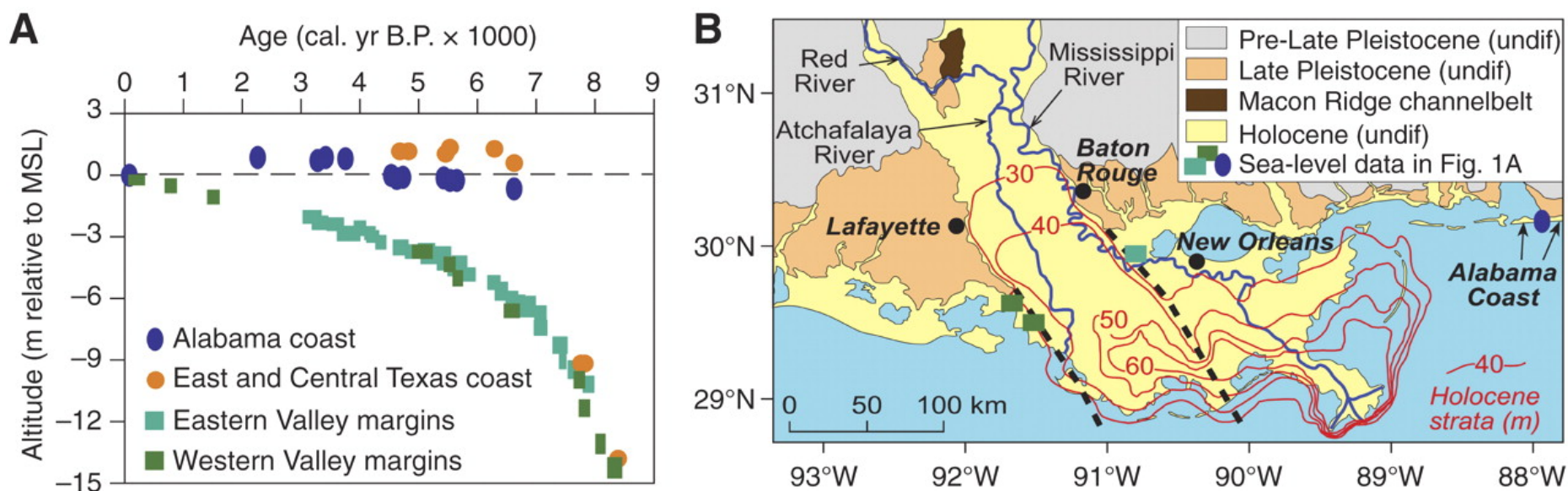


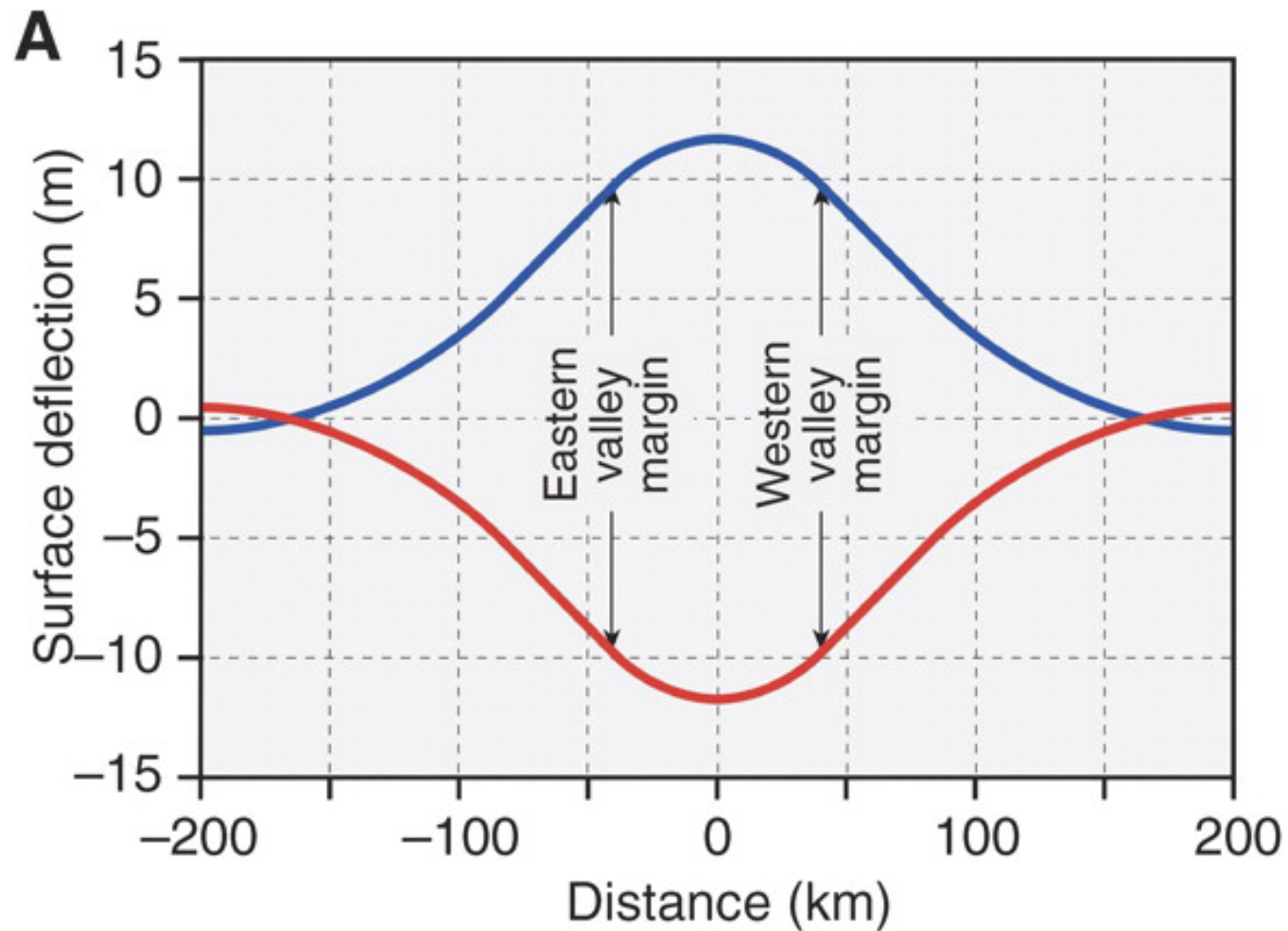
Figure 1. A: Contrasts between sea-level data from Texas and Alabama coasts (from Blum et al., 2001, 2002, 2003; Morton et al., 2000), and data from Mississippi delta region (from Tornqvist et al., 2004, 2006)



Blum, M. D. et al. *Geology* 2008;36:675-678

Figure 3. A: Steady-state surface deflection due to removal and replacement of sediment from lower Mississippi incised valley

Blum, M. D. et al. *Geology* 2008;36:675-678



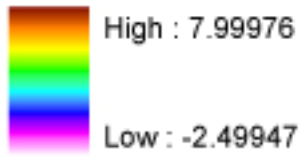
93° 14' W

93° 10' W

93° 06' W

93° 02' W

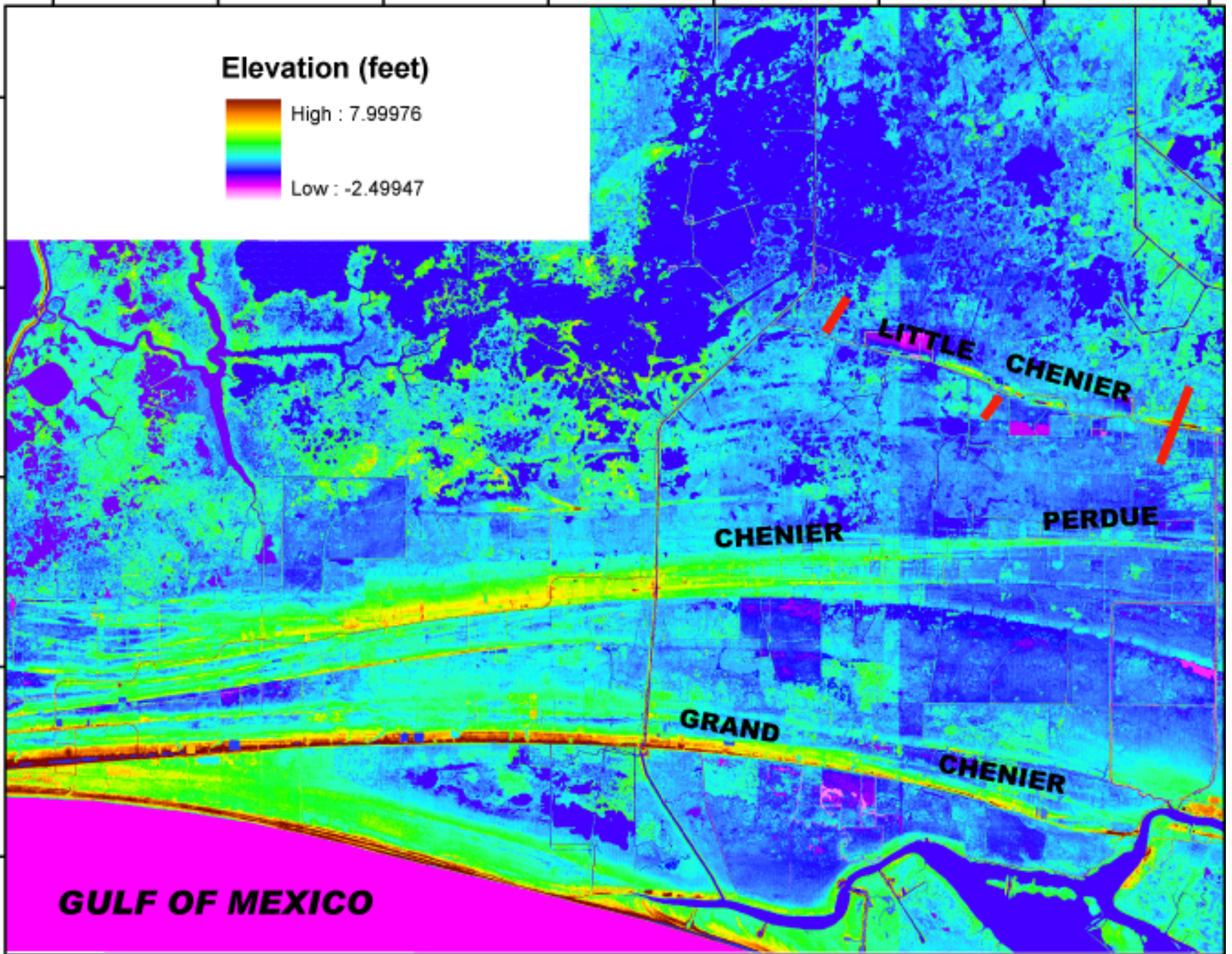
Elevation (feet)



29° 54' N

29° 50' N

29° 46' N



GULF OF MEXICO

